

April - June 2026

Spring-Summer



Spring is here, and with it comes fresh starts, brighter days, and the final stretch of the school year! As we move through April, May, and June, it's the perfect time to pause, breathe, and take care of our mental health while celebrating growth and accomplishments. Whether it's stepping outside for some sunshine, connecting with others, or simply taking a moment to recharge, every small act of self-care matters. Let's finish the school year strong, support one another, and continue to grow together!

Partners office is closed in observance of:

4/3/26 Good Friday
5/25/26 Memorial Day
6/19/26 Juneteenth

MENTAL HEALTH AWARENESS



Mental Health Awareness Event

LIGHT UP THE Night

SHINE THE LIGHT ON MENTAL HEALTH

We will have

- ☆ Food & Games
- ☆ Sensory Room
- ☆ Giveaways
- ☆ Information on Community Providers

FRIDAY, MAY 8, 2026 4-8PM
TABERNACLE BAPTIST CHURCH
UNITY HALL
150 E. SECOND STREET
BURLINGTON, NJ 08016

609-518-6800
Resources@burlingtoncmo.org
www.pfkf.org

4/18/26 BURLINGTON CITY



Mayor Barry Presents

EARTH DAY

2026 Celebration

We invite you to join our Earth Day clean up.

Together we can make a difference.

April 18th

All Ages Welcome!
Individuals/Partners/Groups/Teams!

THIS YEAR'S PROJECT IS PAINTING THE PROMENADE RAILING

9:00AM
Distribution of Equipment and Supplies

Meet at the Anchor

EARTH DAY FAIR SMITHVILLE 4/27/26

AUTISM ACCEPTANCE MONTH



FULL SPECTRUM
THERAPY PARTNERS

POLICE
HAMILTON TOWNSHIP, N.J.

AUTISM Awareness Day

Saturday, April 11th
10am - 1pm

Hamilton Township Police Department
1270 Whitehorse Mercerville Rd.

Join us for a special Autism Awareness Event designed to help children and young adults on the autism spectrum connect with the first responders in their community. This interactive event will give participants the opportunity to meet local police, firefighters, and emergency personnel, explore their vehicles, and learn what to expect when interacting with them in real-life situations. Through hands-on experiences and friendly conversations, we aim to build understanding, comfort, and positive relationships between individuals on the spectrum and the first responders who are here to help keep our community safe.

Help raise awareness to make a better world together!

- Mock Traffic Stops
- Mr. Ray Performance
- Egg Hunt
- Snow Cones
- Tattoo a Cop
- Crafts
- Station Tours
- Dunk Tank
- Dress like a First Responder
- Parent Resource Tables!
- Vehicle Tours

For more information or to have a table at our event please email us: fstherappartners@gmail.com

Join the Burlington Twp Police Department as We Celebrate Autism Awareness Month

PICNIC IN THE PARK

BURLTWPPD.COM

Children & Adults living with Autism along with their families and friends are invited to join us for a fun day at the park!

THIS IS A FREE EVENT!

SATURDAY | APRIL 18 2026
GREEN ACRES 2 PARK
12 - 2 PM 1001 OLD YORK ROAD PAVILION 2

DIVERSITY IS OUR STRENGTH!

Any Questions or sponsor/vendor inquiries please email jpizzigoni123@burltwppd.com



SAVE THE DATE

AUTISM

in my SHOES

symposium

25
APRIL 2026
8:30AM - 2:00PM

This event is designed to bring awareness and meaningful services to those living with Autism Spectrum Disorder (ASD). We are proud to showcase top-notch treatment approaches, county partnerships, and resources available to help aid families in need of assistance. Together, we are building a stronger, more inclusive community for our students and neighbors.

PANEL DISCUSSION	WORKSHOPS	FREE EVENT REGISTRATION REQUIRED	RESOURCE FAIR
-------------------------	------------------	--------------------------------------------	----------------------

Burlington County Special Services School District
20 Pioneer Blvd, Westampton, NJ 08060

Roadmap to Applying for Intellectual and Developmental Disability (I/DD) Services

For Youth with I/DD, such as Down Syndrome, Autism, or Cerebral Palsy

YOUTH AGE 17 AND YOUNGER

Call PerformCare at 1-877-652-7624 to:

- Register to get a CYBER ID. Use this ID to apply for I/DD services and to identify your youth whenever you contact PerformCare.
- Ask questions about the application process.

After approval, access many I/DD services, including:

- Family Support Services for assistive technology, educational advocacy, respite, and more.
- Children's System of Care (CSOC) Summer Camp.

Youth would receive I/DD services until the day before their 21st birthday.

INDIVIDUALS AGE 18 AND OLDER

Gather materials to apply:

- Proof of New Jersey residency for parent or guardian
- Proof that the parent, guardian, or youth is a U.S. citizen or permanent resident
- Proof of youth age
- Any I/DD diagnostic reports from qualified health care providers

Apply for I/DD services by either:

- Completing the application online on the Family Portal. This is the fastest option. Scan the QR code to get started.
- Mailing a completed paper application. You can print the application from the PerformCare New Jersey website or call us to send a paper copy to you.

If individuals 18 and older have not previously applied for I/DD services through PerformCare, they must apply to the New Jersey Division of Developmental Disabilities (DDD) for I/DD and DDD services.

Young adults 18 and older must work with DDD to have adult services in place for when they turn 21 years old.

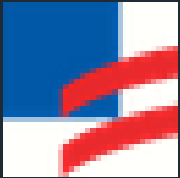
Scan the QR code to apply on the DDD website.

performcarenj.org

PerformCARE®

Shining the Light Mental Health

Visit the links below for more info and resources for mental health



[Perform Care](#)



Burlington County
New Jersey



[Legacy](#)



[Prevention Plus](#)



[988 Life Line](#)



[Oaks Integrated](#)



[Catholic Charities](#)



[Center for Family Services](#)

FROM SCHOOL DAYS TO SUMMER RAYS

SUMMER SAFETY TIPS

POOL/WATER SAFETY

Swim with a buddy and make sure there is a lifeguard on duty.

.....



Summer Fun

WESTAMPTON REC

There are many camps and activities check out the site for full list of offerings.

.....

UV rays can be dangerous don't forget the sunscreen when outdoors!

NHTSA

STOP.LOOK.LOCK

Prevent hot car deaths. 1 in 4 hot car deaths occur when children get left in hot cars.

.....

HYDRATE

Drink plenty of water and eat water-rich foods such as watermelon, cucumbers and oranges.



APPROPRIATE CLOTHES

Dress in light colors and breathable fabrics.

ATSION LAKE

Low-cost way to get outdoors for a fun day! Click the above link for all activities/prices.

.....

BURLINGTON TOWNSHIP RECREATION DEPARTMENT

Green Acres Park, Sylvan's Lake and more! Click above link for info.



Liheap

Need help this summer? Apply for energy assistance at the LIHEAP link above

Let's continue to foster kindness, respect and reflection throughout the year.
Partners Cultural Committee

For more resources visit the [Burlington Resource Net](#)

SUMMER HOLIDAYS AND RESOURCES



Summer Holidays

Earth Day 4/22/26

Mother's Day 5/10/26

Juneteenth 6/19/26

Father's Day 6/21/26

Independence Day 7/4/26

June 14th America's 250th celebrations

Visit the Burlington County Events Calendar link for Juneteenth & all summer events

BURLINGTON COUNTY EVENTS CALENDAR



AMPHITHEATER SUMMER CONCERT SERIES

MOTHER'S DAY TEA AT SMITHVILLE



Kids Gym Indoor Playground | We Rock The Spectrum Mount Laurel, NJ
Autism-focused, indoor playground and kids gym that provides children fun activities and a sensory-safe ...
WRTS Mount Laurel |

Burlington Resource Net

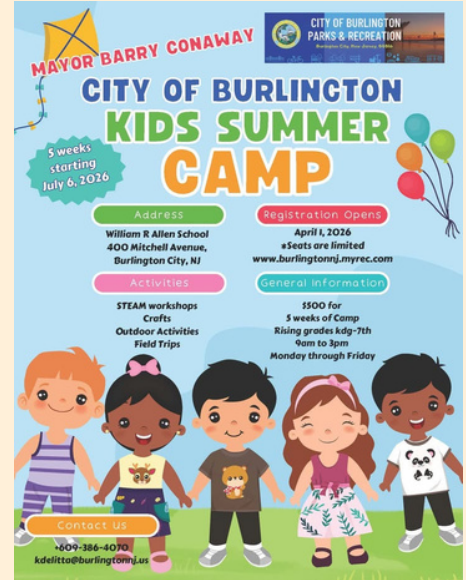
SUMMER CAMPS



YMCA

Moorestown Rec

ATAP



BURLINGTON COUNTY FARMERS MARKET

ARE THE KIDS SUMMER EATING & YOU NEED EXTRA GROCERIES?

Food pantry at SisterHood
Mondays & Wednesdays 11:30 am – 5 pm
Grocery items Tuesday & Thursdays
2pm – 5 pm
Fresh Fruits and Veggies
Fridays 2PM – 5PM
SisterHood Inc
402 York Street
Burlington, NJ 08016

Visit the Food Bank of South Jersey

Hope Mobile Food Distribution

SATURDAY
APRIL 11, 2026

Keegan Recreation Center
522 Wood Street
Burlington, NJ 08016

Drive Thru
10am-11:30am

1. Stay in Your Car
2. Pop Your Trunk
3. Make Space in your vehicle for food boxes

This institution is an equal opportunity provider. Esta institución es un proveedor que ofrece igualdad de oportunidades.

Scheduled Pantry Dates
May 9, 2026
June 13, 2026
*****Second Saturday Monthly*****
Please Bring Proof of NJ Residency

<https://foodbanksj.org/zip-code-locator/>

FOOD BANK OF SOUTH JERSEY
Food | Nutrition | Sustainability
Live Local. Give Local.